

Kingsgate Heather



TECHNICAL SPECIFICATIONS

Country of Origin:	New Zealand	Backing:	Jute
Colours:	7 Standard	Installation Method:	Direct Stick
Yarn:	100% Wool	Type:	Broadloom Carpet
Surface Texture:	Level Loop Pile	Roll Width:	3.66
Gauge:	39.4/10cm (1/10th Gauge)	Secondary Backing:	Jute
Product Thickness:	8mm	Pattern Repeat:	Not Applicable
Pile Weight:	1360g/m ²		

PERFORMANCE

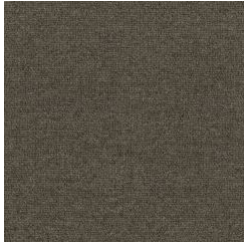
Anti-Static:	(AATCC 134) <3.5KV at 21°C & 20% Relative Humidity
Flammability:	CRF 4.5kW/m2 (Direct Stick)~
Light Reflectance:	Available on Request
Stain Resistance:	Natural Wool Fibre Stain Resistance
ACCS Rating:	Contract Heavy Duty & Stairs (#93131)~
Contract Guarantee:	7 Year Contract Guarantee Available on Request*
Smoke Value:	750% minutes (Direct Stick)

SUSTAINABILITY

PVC Minimisation:	PVC Free
Indoor Air Quality:	Green Building Council compliant for VOC emission rate limits
Product Transparency:	Quality NZ Made Carpet, Residential Extra Heavy Duty and Suitable for Stairs - 6 star., Contract Heavy Duty and Suitable for Stairs - 3 star., Environmental Certification Scheme Level 4
Green Star:	Environmental Certification Scheme (ECS). Level 4 Maximum Points - Certificate #93130
Accreditation:	Manufactured under a quality and environmental system certified and complying with ISO 9001 and ISO 14001 by an accredited certification body.



Kingsgate Heather



0285
RIVERSIDE



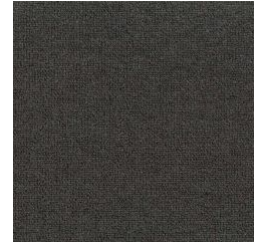
0895
OCEAN



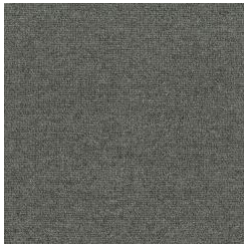
0890
REEF



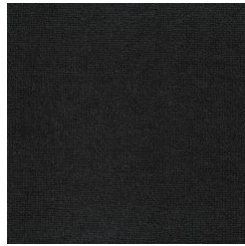
0795
BLACK BIRD



0790
SLATE



0725
IRON GATE



0799
ONYX

Specifications and colourations are subject to manufacturing tolerances. As part of the GH Commercial continuous improvement program, GH Commercial reserves the right to change the specifications of or delete colours of this product without notice. While all care is taken, product images may vary in colour due to possible printing process variations. Images do not seek to duplicate the exact visual appearance, but serve merely as a guide or point of reference.

All GH Commercial carpets must be installed in accordance with the latest AS2455 and any relevant GH Commercial Installation Instructions. ~Test results and certificates are available on request. *This guarantee is in addition to any rights consumers may have under Australian consumer laws. Terms and conditions apply - for full information in respect to the scope of the guarantee, please contact your GH Commercial Account Manager or our Head Office.