

TECHNICAL SPECIFICATIONS

Country of Origin:	Australia	Backing:	Enviro Bac®
Colours:	3 Standard	Carpet Tiles & Planks Size:	500mm x 500mm
Yarn:	100% BCF Yarn Dyed Nylon	Installation Method:	Direct Stick
Surface Texture:	Patterned Loop Pile	Type:	Carpet Tiles and Planks
Gauge:	47.2/10cm (1/12th Gauge)	Units Per Box:	18
Product Thickness:	7.00mm	m ² per box:	4.5
Pile Weight:	745g/m ²		

PERFORMANCE

Anti-Static:	(AATCC 134) <3.5KV at 21°C & 20% Relative Humidity
Flammability:	CRF 8.0kW/m2 (Direct Stick)~
Colourfast to light:	(ISO 105-B-02-1994) 6-7
Light Reflectance:	Available on Request
Stain Resistance:	Stain Warden®
Biocontaminant Control:	Bioshield® Antimicrobial Control
ACCS Rating:	Contract Extra Heavy Duty & Stairs (#10154)~
Contract Warranty:	15 Years Available on Request*
Smoke Value:	261% minutes (Direct Stick)

SUSTAINABILITY

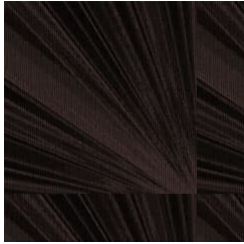
PVC Minimisation:	PVC Free
Indoor Air Quality:	Green Building Council Compliant for VOC emission rate limits
Product Transparency:	Declare Red List Free
Green Star:	Environmental Certification Scheme (ECS). Level 4 Maximum Points - Certificate #10154
Accreditation:	Manufactured under a quality, environmental and health and safety system certified and complying with ISO 9001, ISO 14001 and AS 4801 by accredited certification bodies.

AVAILABILITY

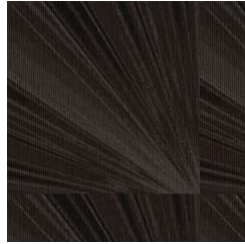
Other Options:	Sculptured Loop Pile, Patterned Cut Pile
----------------	--



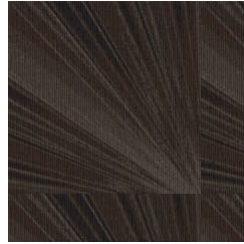
Fracture



1890
COLLECTION 1890



1870
COLLECTION 1870



1850
COLLECTION 1850

Specifications and colourations are subject to manufacturing tolerances. As part of the GH Commercial continuous improvement program, GH Commercial reserves the right to change the specifications of or delete colours of this product without notice. While all care is taken, product images may vary in colour due to possible printing process variations. Images do not seek to duplicate the exact visual appearance, but serve merely as a guide or point of reference.

All GH Commercial carpet tiles and planks must be installed in accordance with AS2455 Parts 1 & 2 (latest version) and the GH Commercial Carpet Tile/Plank Installation Instructions.

Chair pads are recommended under office chairs with roller castors to preserve appearance retention, act as a deterrent toward delamination and to prevent premature or accelerated wear. Walk-off tiles from the Tuff Stuff II Collection are recommended at entryways to reduce soiling.

~Test results and certificates are available on request.

*Warranty is in addition to any rights consumers may have under Australian consumer laws. Terms and conditions apply - for full information in respect to the scope of the warranty please contact your GH Commercial Account Manager or our Head Office.