

# Micro Bloom 1.5



## TECHNICAL SPECIFICATIONS

Collection:	Lichen 1.5	Backing:	Enviro Bac®
Country of Origin:	Australia	Carpet Tiles & Planks Size:	304.8mm x 914.4mm
Colours:	9 Standard	Installation Method:	Herringbone, Ashlar, Half-Lap, Plank Half-Lap,
Yarn:	Duracolor® Tricor Solution Dyed Nylon	Type:	Carpet Tiles and Planks
Surface Texture:	Patterned Textured Loop Pile	Units Per Box:	14
Gauge:	47/10cm (1/12th Gauge)	m <sup>2</sup> per box:	3.902
Product Thickness:	8.50mm	m <sup>2</sup> per pallet:	105.35
Pile Weight:	780g/m <sup>2</sup>	Pattern Repeat:	Not Applicable

## PERFORMANCE

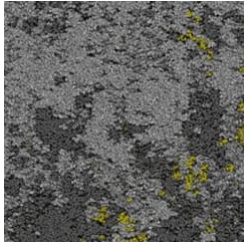
Anti-Static:	(AATCC 134) <3.5KV at 21°C & 20% Relative Humidity
Flammability:	Meets the requirements of NCC Spec. C1.10 relating to fire hazard properties for flooring in Class 2-9 buildings~
Colourfast to light:	(ISO 105-B-02-1994) 6-7
Light Reflectance:	Available on Request
Stain Resistance:	Duracolor® Tricor - Permanent, Built into fibre
Contract Guarantee:	15 Years Available on Request*
Recommended Adhesive:	Refer to our GH Commercial Adhesive Guide <a href="http://www.ghcommercial.com">www.ghcommercial.com</a>
Soil Resistance:	EcoSentry Soil Treatment

## SUSTAINABILITY

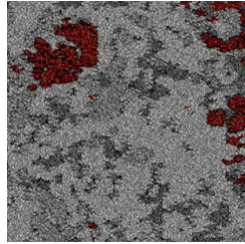
PVC Minimisation:	PVC Free
Indoor Air Quality:	Green Building Council Compliant for VOC emission rate limits
Product Transparency:	Declare Red List Free, Global Green Tag, GreenRate Level A certified
Recycled Content:	Duracolor® Tricor yarn contains 34% pre-consumer recycled content.
Green Star:	Environmental Certification Scheme (ECS) Level 4 Maximum Points
Accreditation:	Manufactured under a quality, environmental and health and safety system certified and complying with ISO 9001, ISO 14001 and AS 4801 by accredited certification bodies.



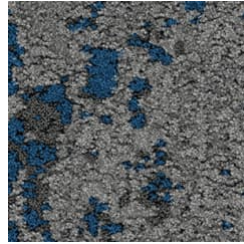
# Micro Bloom 1.5



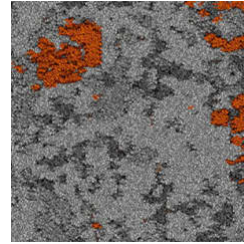
0941  
GOLDSPECK



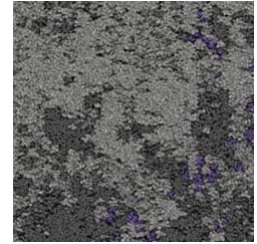
0963  
FIREDOT



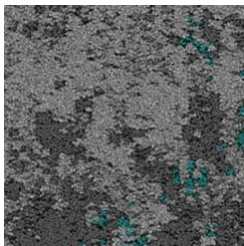
0975  
FELT FINISH



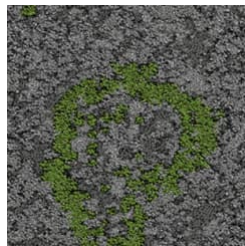
0952  
ORANGE SEA



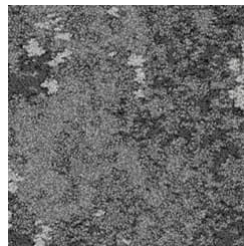
0954  
EVERBLOOM



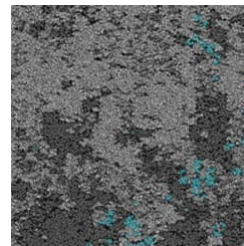
0976  
DUST CLOUD



0956  
ICELAND MOSS



0937  
FROSTED SHIELD



0945  
SILVA

Specifications and colourations are subject to manufacturing tolerances. As part of the GH Commercial continuous improvement program, GH Commercial reserves the right to change the specifications of or delete colours of this product without notice. While all care is taken, product images may vary in colour due to possible printing process variations. Images do not seek to duplicate the exact visual appearance, but serve merely as a guide or point of reference.

All GH Commercial carpet tiles and planks must be installed in accordance with AS2455 Parts 1 & 2 (latest version) and the GH Commercial Carpet Tile/Plank Installation Instructions.

Chair pads are recommended under office chairs with roller castors to preserve appearance retention, act as a deterrent toward delamination and to prevent premature or accelerated wear. Walk-off tiles from the Tuff Stuff II Collection are recommended at entryways to reduce soiling.

~Test results and certificates are available on request.

\*Guarantee is in addition to any rights consumers may have under Australian consumer laws. Terms and conditions apply - for full information in respect to the scope of the guarantee please contact your GH Commercial Account Manager or our Head Office.